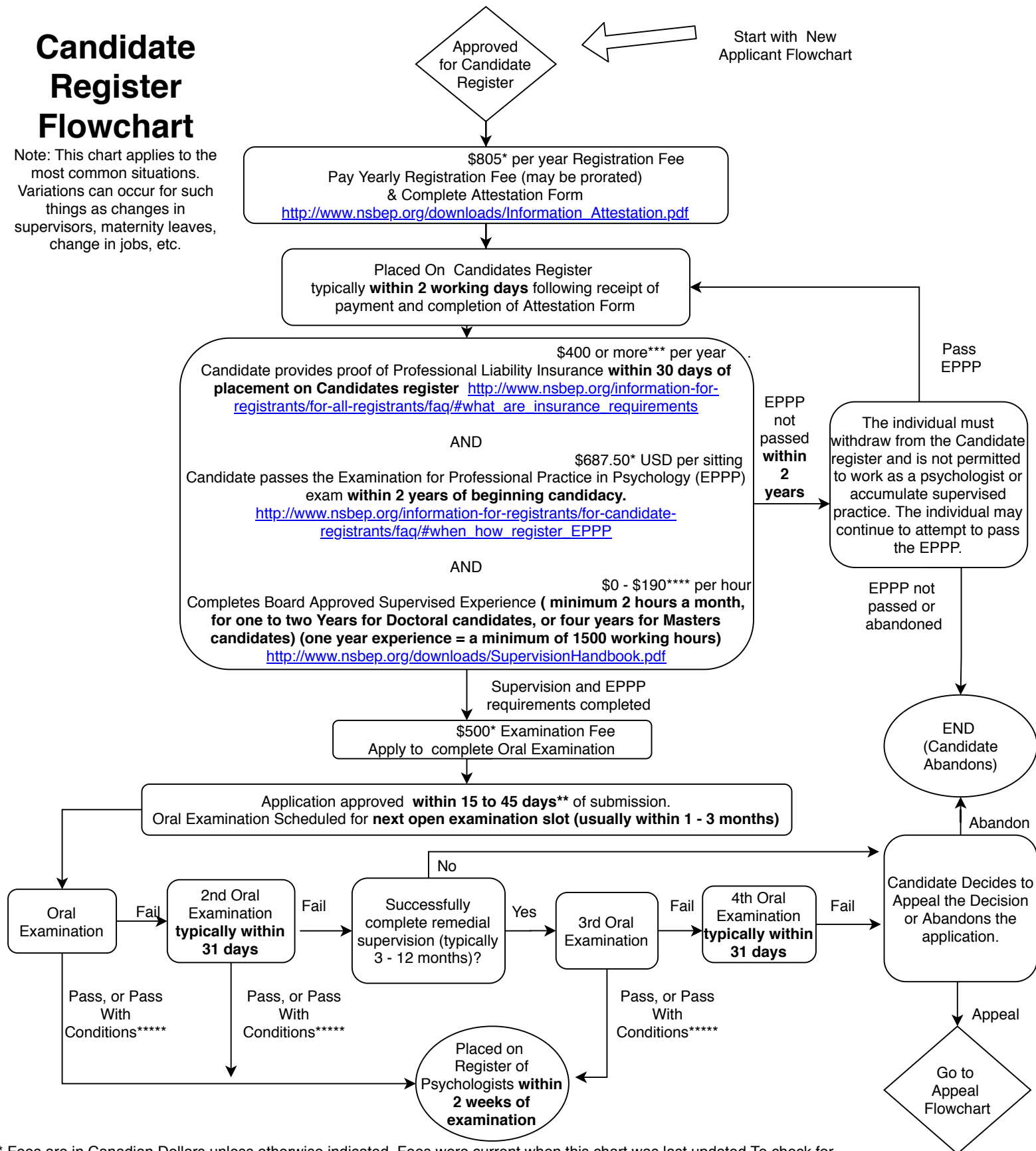


Candidate Register Flowchart

Note: This chart applies to the most common situations. Variations can occur for such things as changes in supervisors, maternity leaves, change in jobs, etc.

Start with New Applicant Flowchart



* Fees are in Canadian Dollars unless otherwise indicated. Fees were current when this chart was last updated. To check for current fees, goto <http://www.nsbep.org/about-nsbep/all-fees/>

** The Registration Subcommittee meets once per month and requires that all materials be submitted at least 2 weeks in advance of the meeting. The Subcommittee does not meet in August. Submissions that do not meet the July deadline will not be reviewed until September. For a list of Board meeting dates, goto https://www.nsbep.org/about-nsbep/information-for-registrantsfor-all-registrantsnewsmeeting_dates/

*** All Psychologists and Psychologists (Candidates Register) are required to have professional liability insurance. NSBEP does not provide insurance and this must be obtained directly from an insurance company. See <http://www.nsbep.org/information-for-registrantsfor-all-registrantsfaq/#what-are-insurance-requirements>

**** Most supervisors do not request payment for providing supervision. If payment is requested, this may be on a sliding scale but is often at usual private practice hourly session fee.

***** Pass with conditions can be appealed.